



Name: _____

Date: _____

Bill Nye the Science Guy: Cells

/35

1. All plants and animals in the world are made of _____.
2. People have about _____ cells.
3. Cells are like _____, but cells are _____.
4. Alive or not: What are 2 examples of things that are alive? _____,

5. What are 2 cell parts that both plants and animals have? _____,

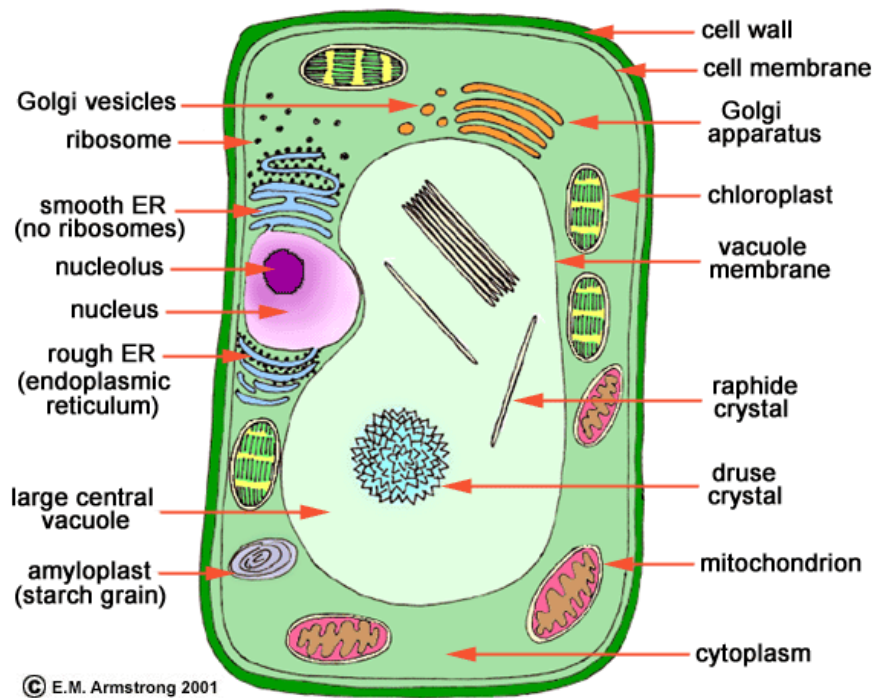
6. Instead of a wall (like in a house), cells have a _____ (plants) or a
_____ (animals).
7. The _____ controls the cell.
8. _____ power the cell.
9. Different cells are like different _____ of the house.
10. Yogurt and cheese are made of _____ cells.
11. _____ are like a roadmap for the cell.
12. During metamorphosis, all the cells get _____.
13. _____ is your body's fastest growing organ.
14. There is no such thing as a _____ boy.
15. _____ tell your cells what to do.
16. Genes are made of _____.



Name: _____

Date: _____

17. _____ are cells you can see without a microscope.
18. _____ have cells that are all dried out.
19. The protein *hemoglobin* has _____ in it which makes blood _____ in color when its hemoglobin is carrying _____.
20. Not all blood cells are _____. Some cells are _____.
21. _____ attack _____ and _____ to keep us from getting sick.
22. Cells exchange _____ with other cells through their _____ using a process called _____.
23. We all start as _____ cell. We end up with _____ of cells.





Name: _____

Date: _____

Bill Nye the Science Guy: Cells

/35

1. All plants and animals in the world are made of _____.
2. People have about _____ cells.
3. Cells are like _____, but cells are _____.
4. Alive or not: What are 2 examples of things that are alive? _____,

5. What are 2 cell parts that both plants and animals have? _____,

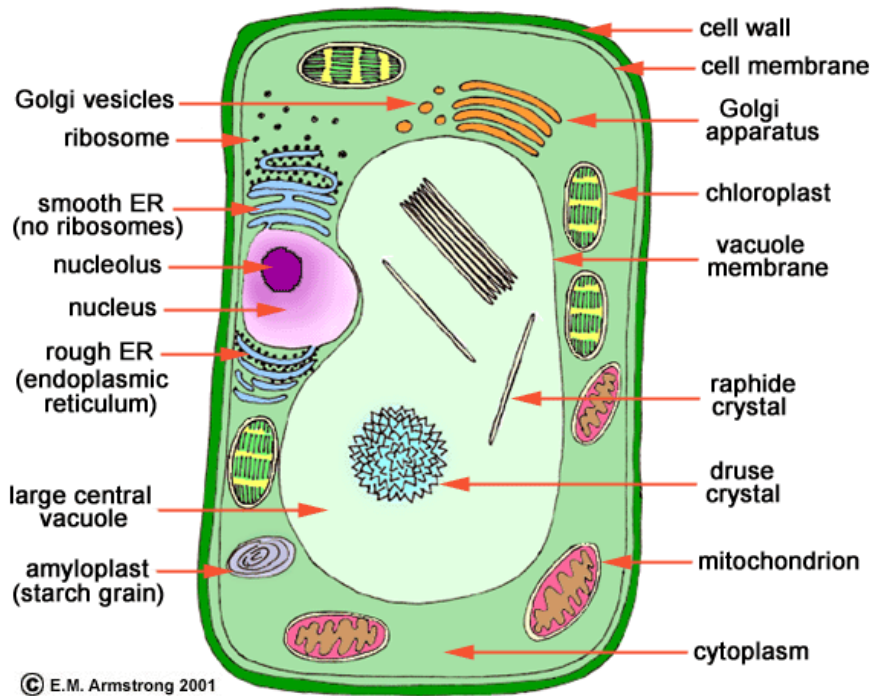
6. Instead of a wall (like in a house), cells have a _____ (plants) or a
_____ (animals).
7. The _____ controls the cell.
8. _____ power the cell.
9. Different cells are like different _____ of the house.
10. Yogurt and cheese are made of _____ cells.
11. _____ are like a roadmap for the cell.
12. During metamorphosis, all the cells get _____.
13. _____ is your body's fastest growing organ.
14. There is no such thing as a _____ boy.
15. _____ tell your cells what to do.
16. Genes are made of _____.



Name: _____

Date: _____

17. _____ are cells you can see without a microscope.
18. _____ have cells that are all dried out.
19. The protein *hemoglobin* has _____ in it which makes blood _____ in color when its hemoglobin is carrying _____.
20. Not all blood cells are _____. Some cells are _____.
21. _____ attack _____ and _____ to keep us from getting sick.
22. Cells exchange _____ with other cells through their _____ using a process called _____.
23. We all start as _____ cell. We end up with _____ of cells.





Name: _____

Date: _____

Bill Nye the Science Guy: Cells

/35

1. All plants and animals in the world are made of _____.
2. People have about _____ cells.
3. Cells are like _____, but cells are _____.
4. Alive or not: What are 2 examples of things that are alive? _____,

5. What are 2 cell parts that both plants and animals have? _____,

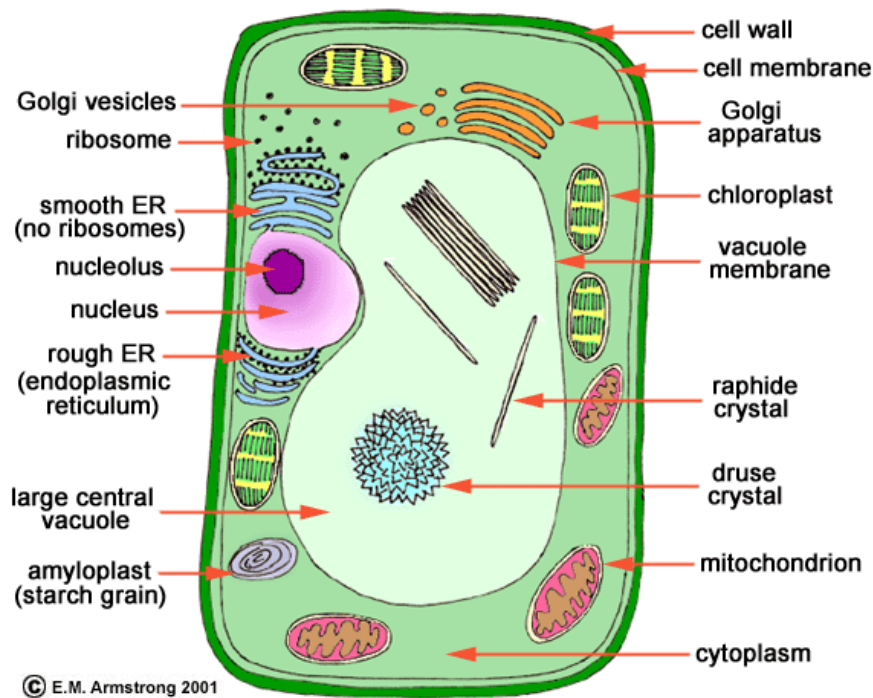
6. Instead of a wall (like in a house), cells have a _____ (plants) or a
_____ (animals).
7. The _____ controls the cell.
8. _____ power the cell.
9. Different cells are like different _____ of the house.
10. Yogurt and cheese are made of _____ cells.
11. _____ are like a roadmap for the cell.
12. During metamorphosis, all the cells get _____.
13. _____ is your body's fastest growing organ.
14. There is no such thing as a _____ boy.
15. _____ tell your cells what to do.
16. Genes are made of _____.



Name: _____

Date: _____

17. _____ are cells you can see without a microscope.
18. _____ have cells that are all dried out.
19. The protein *hemoglobin* has _____ in it which makes blood _____ in color when its hemoglobin is carrying _____.
20. Not all blood cells are _____. Some cells are _____.
21. _____ attack _____ and _____ to keep us from getting sick.
22. Cells exchange _____ with other cells through their _____ using a process called _____.
23. We all start as _____ cell. We end up with _____ of cells.





Name: _____

Date: _____

Bill Nye the Science Guy: Cells

/35

1. All plants and animals in the world are made of _____.
2. People have about _____ cells.
3. Cells are like _____, but cells are _____.
4. Alive or not: What are 2 examples of things that are alive? _____,

5. What are 2 cell parts that both plants and animals have? _____,

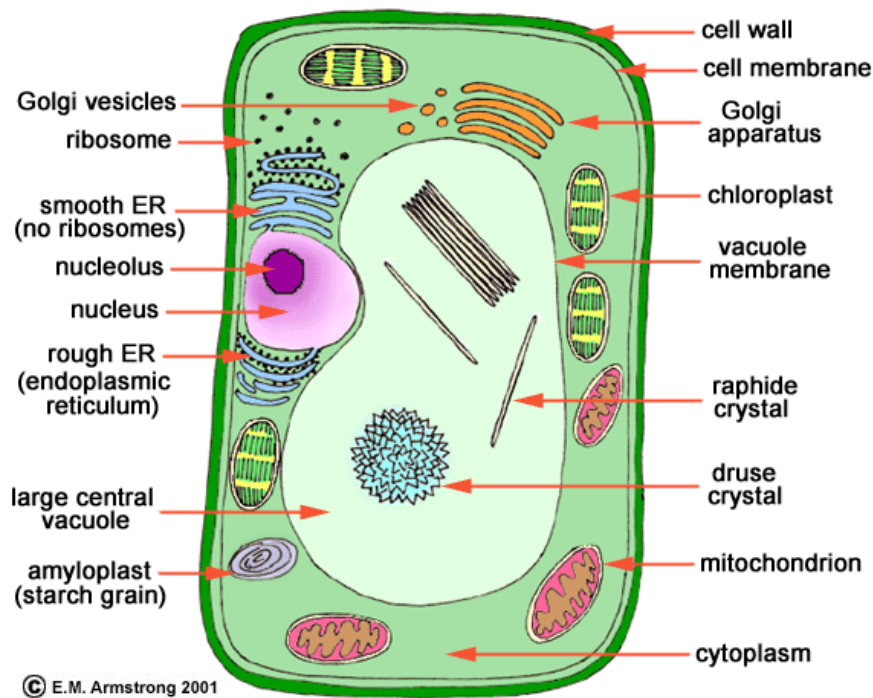
6. Instead of a wall (like in a house), cells have a _____ (plants) or a
_____ (animals).
7. The _____ controls the cell.
8. _____ power the cell.
9. Different cells are like different _____ of the house.
10. Yogurt and cheese are made of _____ cells.
11. _____ are like a roadmap for the cell.
12. During metamorphosis, all the cells get _____.
13. _____ is your body's fastest growing organ.
14. There is no such thing as a _____ boy.
15. _____ tell your cells what to do.
16. Genes are made of _____.



Name: _____

Date: _____

17. _____ are cells you can see without a microscope.
18. _____ have cells that are all dried out.
19. The protein *hemoglobin* has _____ in it which makes blood _____ in color when its hemoglobin is carrying _____.
20. Not all blood cells are _____. Some cells are _____.
21. _____ attack _____ and _____ to keep us from getting sick.
22. Cells exchange _____ with other cells through their _____ using a process called _____.
23. We all start as _____ cell. We end up with _____ of cells.





Name: _____

Date: _____

Bill Nye the Science Guy: Cells

/35

1. All plants and animals in the world are made of _____.
2. People have about _____ cells.
3. Cells are like _____, but cells are _____.
4. Alive or not: What are 2 examples of things that are alive? _____,

5. What are 2 cell parts that both plants and animals have? _____,

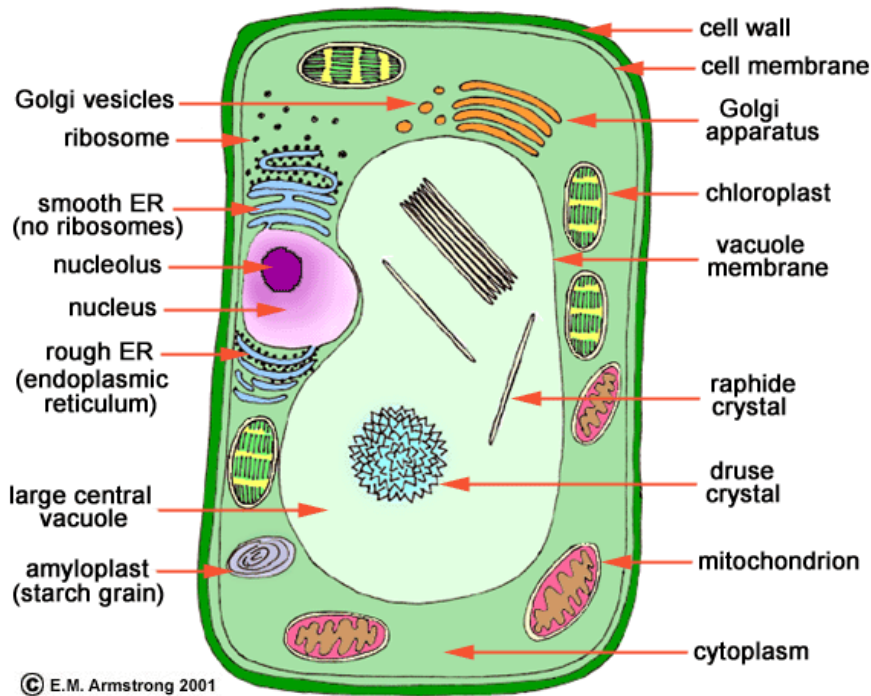
6. Instead of a wall (like in a house), cells have a _____ (plants) or a
_____ (animals).
7. The _____ controls the cell.
8. _____ power the cell.
9. Different cells are like different _____ of the house.
10. Yogurt and cheese are made of _____ cells.
11. _____ are like a roadmap for the cell.
12. During metamorphosis, all the cells get _____.
13. _____ is your body's fastest growing organ.
14. There is no such thing as a _____ boy.
15. _____ tell your cells what to do.
16. Genes are made of _____.



Name: _____

Date: _____

17. _____ are cells you can see without a microscope.
18. _____ have cells that are all dried out.
19. The protein *hemoglobin* has _____ in it which makes blood _____ in color when its hemoglobin is carrying _____.
20. Not all blood cells are _____. Some cells are _____.
21. _____ attack _____ and _____ to keep us from getting sick.
22. Cells exchange _____ with other cells through their _____ using a process called _____.
23. We all start as _____ cell. We end up with _____ of cells.





Name: _____

Date: _____

Bill Nye the Science Guy: Cells

/35

1. All plants and animals in the world are made of _____.
2. People have about _____ cells.
3. Cells are like _____, but cells are _____.
4. Alive or not: What are 2 examples of things that are alive? _____,

5. What are 2 cell parts that both plants and animals have? _____,

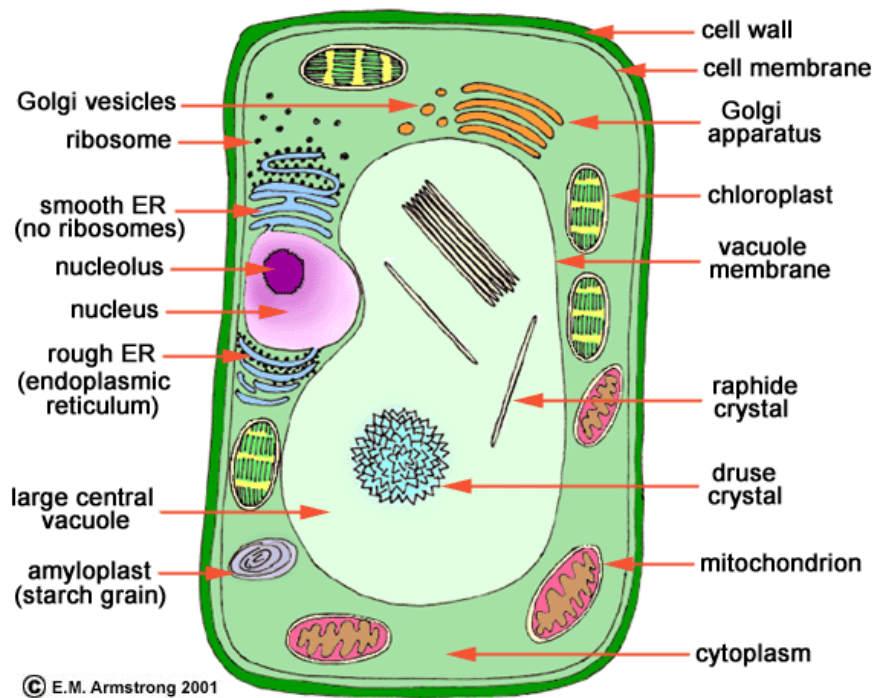
6. Instead of a wall (like in a house), cells have a _____ (plants) or a
_____ (animals).
7. The _____ controls the cell.
8. _____ power the cell.
9. Different cells are like different _____ of the house.
10. Yogurt and cheese are made of _____ cells.
11. _____ are like a roadmap for the cell.
12. During metamorphosis, all the cells get _____.
13. _____ is your body's fastest growing organ.
14. There is no such thing as a _____ boy.
15. _____ tell your cells what to do.
16. Genes are made of _____.



Name: _____

Date: _____

17. _____ are cells you can see without a microscope.
18. _____ have cells that are all dried out.
19. The protein *hemoglobin* has _____ in it which makes blood _____ in color when its hemoglobin is carrying _____.
20. Not all blood cells are _____. Some cells are _____.
21. _____ attack _____ and _____ to keep us from getting sick.
22. Cells exchange _____ with other cells through their _____ using a process called _____.
23. We all start as _____ cell. We end up with _____ of cells.





Name: _____

Date: _____

Bill Nye the Science Guy: Cells

/35

1. All plants and animals in the world are made of _____.
2. People have about _____ cells.
3. Cells are like _____, but cells are _____.
4. Alive or not: What are 2 examples of things that are alive? _____,

5. What are 2 cell parts that both plants and animals have? _____,

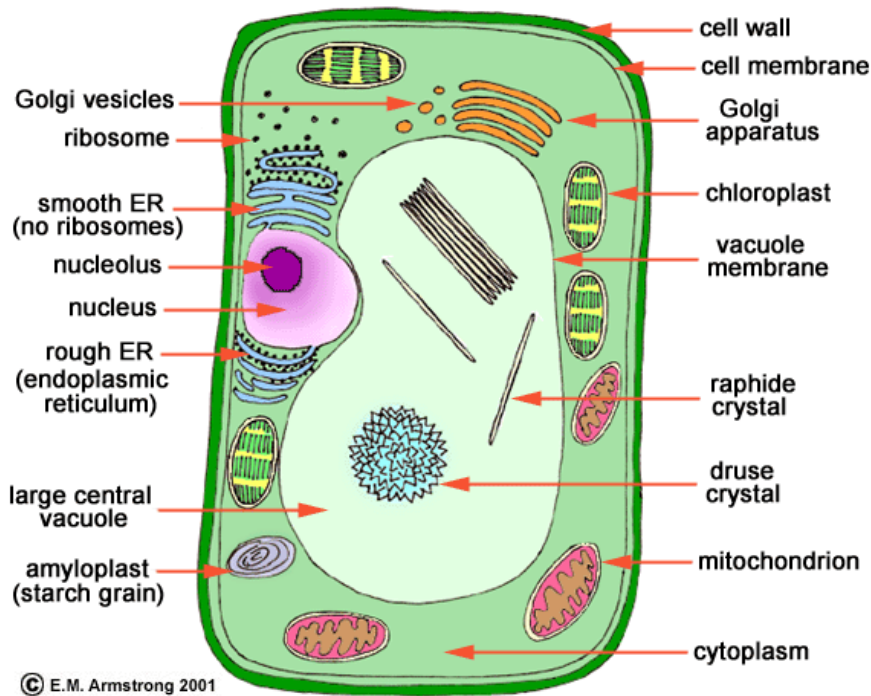
6. Instead of a wall (like in a house), cells have a _____ (plants) or a
_____ (animals).
7. The _____ controls the cell.
8. _____ power the cell.
9. Different cells are like different _____ of the house.
10. Yogurt and cheese are made of _____ cells.
11. _____ are like a roadmap for the cell.
12. During metamorphosis, all the cells get _____.
13. _____ is your body's fastest growing organ.
14. There is no such thing as a _____ boy.
15. _____ tell your cells what to do.
16. Genes are made of _____.



Name: _____

Date: _____

17. _____ are cells you can see without a microscope.
18. _____ have cells that are all dried out.
19. The protein *hemoglobin* has _____ in it which makes blood _____ in color when its hemoglobin is carrying _____.
20. Not all blood cells are _____. Some cells are _____.
21. _____ attack _____ and _____ to keep us from getting sick.
22. Cells exchange _____ with other cells through their _____ using a process called _____.
23. We all start as _____ cell. We end up with _____ of cells.





Name: _____

Date: _____

Bill Nye the Science Guy: Cells

/35

1. All plants and animals in the world are made of _____.
2. People have about _____ cells.
3. Cells are like _____, but cells are _____.
4. Alive or not: What are 2 examples of things that are alive? _____,

5. What are 2 cell parts that both plants and animals have? _____,

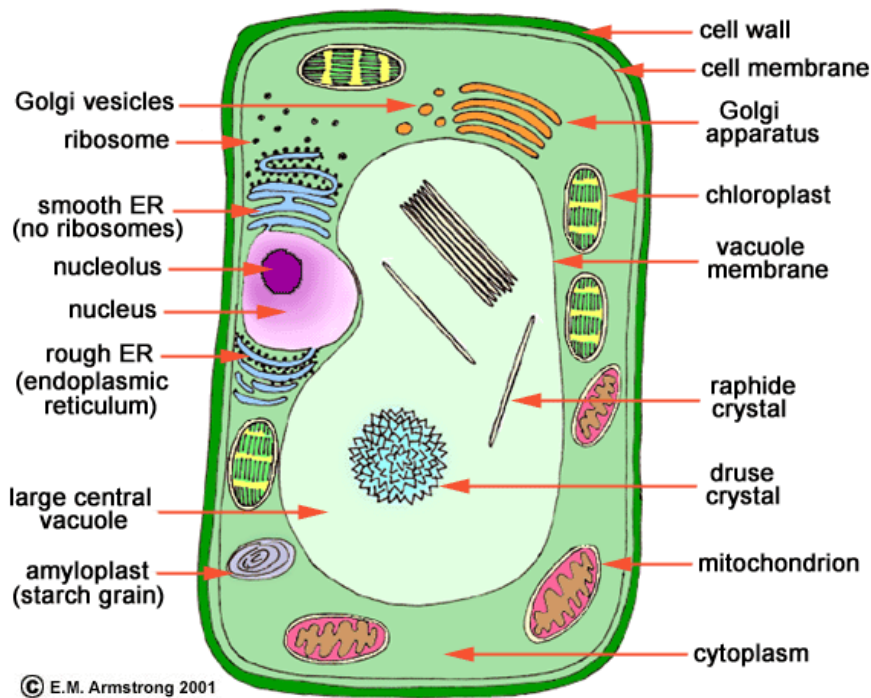
6. Instead of a wall (like in a house), cells have a _____ (plants) or a
_____ (animals).
7. The _____ controls the cell.
8. _____ power the cell.
9. Different cells are like different _____ of the house.
10. Yogurt and cheese are made of _____ cells.
11. _____ are like a roadmap for the cell.
12. During metamorphosis, all the cells get _____.
13. _____ is your body's fastest growing organ.
14. There is no such thing as a _____ boy.
15. _____ tell your cells what to do.
16. Genes are made of _____.



Name: _____

Date: _____

17. _____ are cells you can see without a microscope.
18. _____ have cells that are all dried out.
19. The protein *hemoglobin* has _____ in it which makes blood _____ in color when its hemoglobin is carrying _____.
20. Not all blood cells are _____. Some cells are _____.
21. _____ attack _____ and _____ to keep us from getting sick.
22. Cells exchange _____ with other cells through their _____ using a process called _____.
23. We all start as _____ cell. We end up with _____ of cells.





Name: _____

Date: _____

Bill Nye the Science Guy: Cells

/35

1. All plants and animals in the world are made of _____.
2. People have about _____ cells.
3. Cells are like _____, but cells are _____.
4. Alive or not: What are 2 examples of things that are alive? _____,

5. What are 2 cell parts that both plants and animals have? _____,

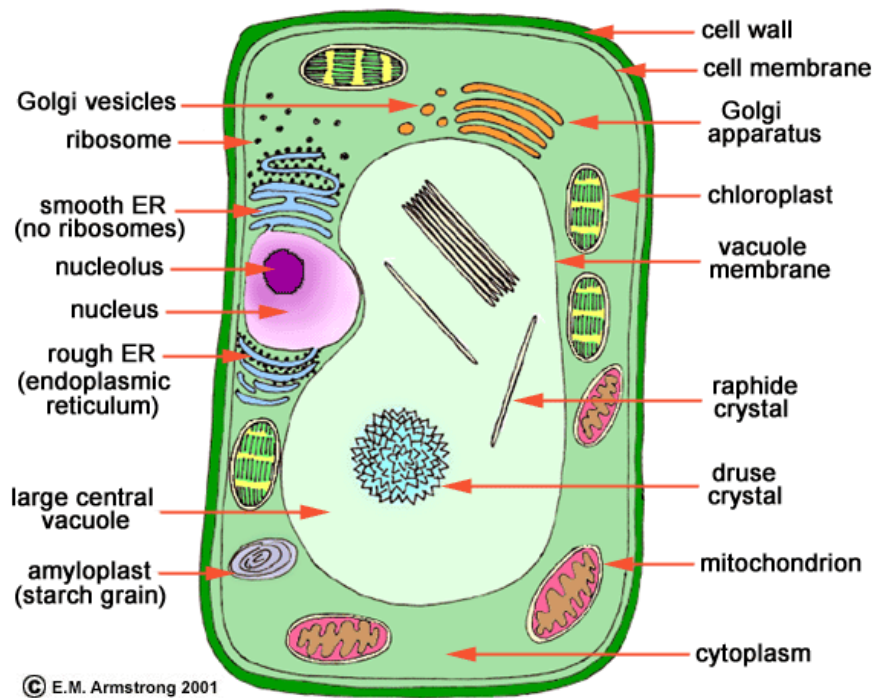
6. Instead of a wall (like in a house), cells have a _____ (plants) or a
_____ (animals).
7. The _____ controls the cell.
8. _____ power the cell.
9. Different cells are like different _____ of the house.
10. Yogurt and cheese are made of _____ cells.
11. _____ are like a roadmap for the cell.
12. During metamorphosis, all the cells get _____.
13. _____ is your body's fastest growing organ.
14. There is no such thing as a _____ boy.
15. _____ tell your cells what to do.
16. Genes are made of _____.



Name: _____

Date: _____

17. _____ are cells you can see without a microscope.
18. _____ have cells that are all dried out.
19. The protein *hemoglobin* has _____ in it which makes blood _____ in color when its hemoglobin is carrying _____.
20. Not all blood cells are _____. Some cells are _____.
21. _____ attack _____ and _____ to keep us from getting sick.
22. Cells exchange _____ with other cells through their _____ using a process called _____.
23. We all start as _____ cell. We end up with _____ of cells.





Name: _____

Date: _____

Bill Nye the Science Guy: Cells

/35

1. All plants and animals in the world are made of _____.
2. People have about _____ cells.
3. Cells are like _____, but cells are _____.
4. Alive or not: What are 2 examples of things that are alive? _____,

5. What are 2 cell parts that both plants and animals have? _____,

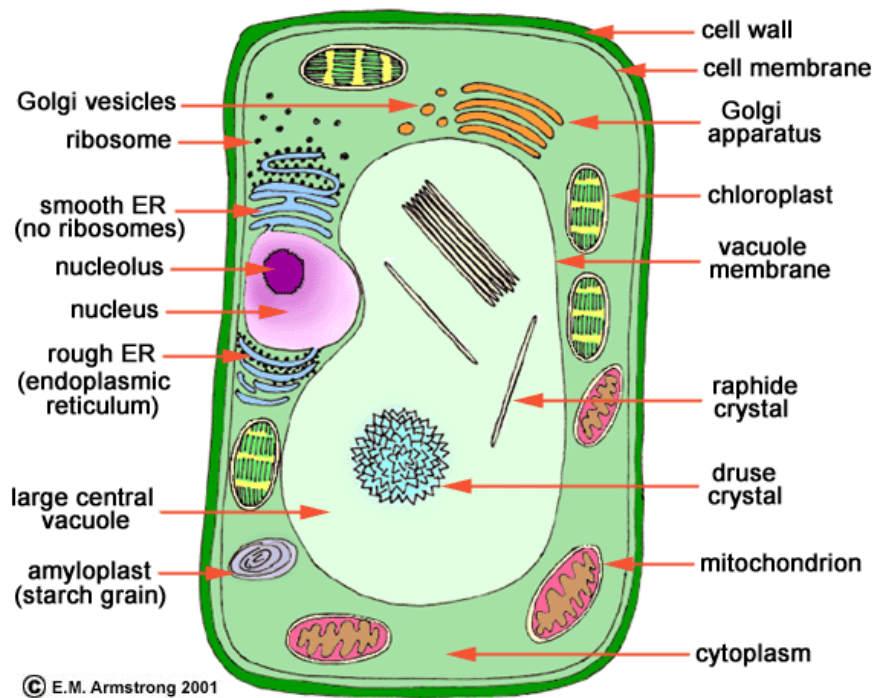
6. Instead of a wall (like in a house), cells have a _____ (plants) or a
_____ (animals).
7. The _____ controls the cell.
8. _____ power the cell.
9. Different cells are like different _____ of the house.
10. Yogurt and cheese are made of _____ cells.
11. _____ are like a roadmap for the cell.
12. During metamorphosis, all the cells get _____.
13. _____ is your body's fastest growing organ.
14. There is no such thing as a _____ boy.
15. _____ tell your cells what to do.
16. Genes are made of _____.



Name: _____

Date: _____

17. _____ are cells you can see without a microscope.
18. _____ have cells that are all dried out.
19. The protein *hemoglobin* has _____ in it which makes blood _____ in color when its hemoglobin is carrying _____.
20. Not all blood cells are _____. Some cells are _____.
21. _____ attack _____ and _____ to keep us from getting sick.
22. Cells exchange _____ with other cells through their _____ using a process called _____.
23. We all start as _____ cell. We end up with _____ of cells.





Name: _____

Date: _____

Bill Nye the Science Guy: Cells

/35

1. All plants and animals in the world are made of _____.
2. People have about _____ cells.
3. Cells are like _____, but cells are _____.
4. Alive or not: What are 2 examples of things that are alive? _____,

5. What are 2 cell parts that both plants and animals have? _____,

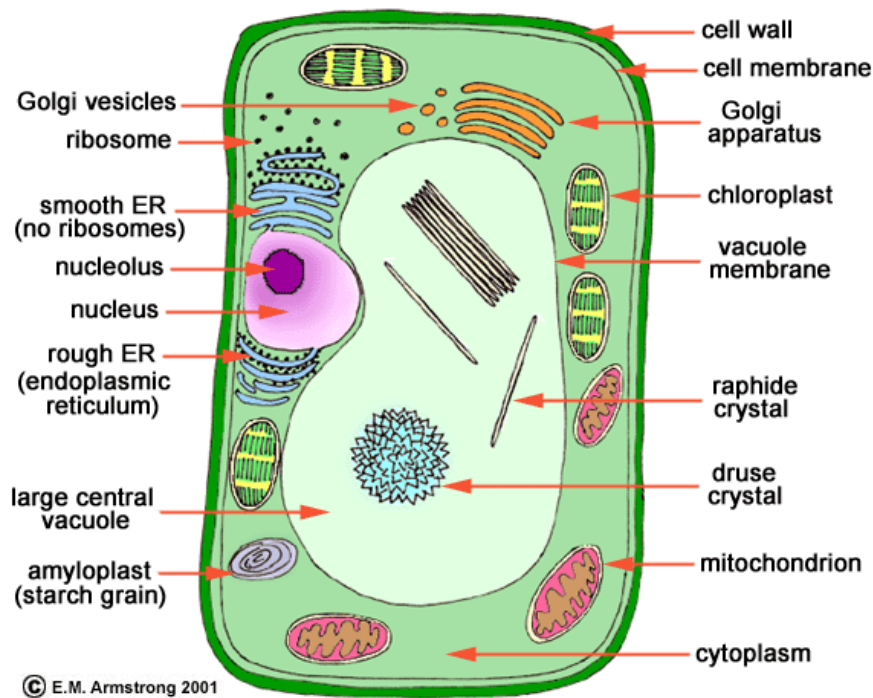
6. Instead of a wall (like in a house), cells have a _____ (plants) or a
_____ (animals).
7. The _____ controls the cell.
8. _____ power the cell.
9. Different cells are like different _____ of the house.
10. Yogurt and cheese are made of _____ cells.
11. _____ are like a roadmap for the cell.
12. During metamorphosis, all the cells get _____.
13. _____ is your body's fastest growing organ.
14. There is no such thing as a _____ boy.
15. _____ tell your cells what to do.
16. Genes are made of _____.



Name: _____

Date: _____

17. _____ are cells you can see without a microscope.
18. _____ have cells that are all dried out.
19. The protein *hemoglobin* has _____ in it which makes blood _____ in color when its hemoglobin is carrying _____.
20. Not all blood cells are _____. Some cells are _____.
21. _____ attack _____ and _____ to keep us from getting sick.
22. Cells exchange _____ with other cells through their _____ using a process called _____.
23. We all start as _____ cell. We end up with _____ of cells.





Name: _____

Date: _____

Bill Nye the Science Guy: Cells

/35

1. All plants and animals in the world are made of _____.
2. People have about _____ cells.
3. Cells are like _____, but cells are _____.
4. Alive or not: What are 2 examples of things that are alive? _____,

5. What are 2 cell parts that both plants and animals have? _____,

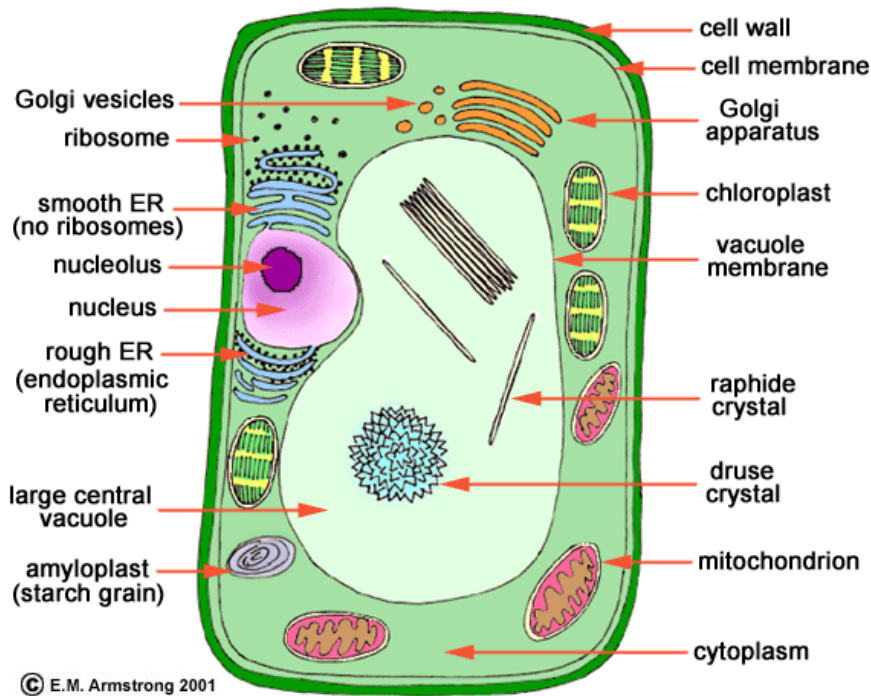
6. Instead of a wall (like in a house), cells have a _____ (plants) or a
_____ (animals).
7. The _____ controls the cell.
8. _____ power the cell.
9. Different cells are like different _____ of the house.
10. Yogurt and cheese are made of _____ cells.
11. _____ are like a roadmap for the cell.
12. During metamorphosis, all the cells get _____.
13. _____ is your body's fastest growing organ.
14. There is no such thing as a _____ boy.
15. _____ tell your cells what to do.
16. Genes are made of _____.



Name: _____

Date: _____

17. _____ are cells you can see without a microscope.
18. _____ have cells that are all dried out.
19. The protein *hemoglobin* has _____ in it which makes blood _____ in color when its hemoglobin is carrying _____.
20. Not all blood cells are _____. Some cells are _____.
21. _____ attack _____ and _____ to keep us from getting sick.
22. Cells exchange _____ with other cells through their _____ using a process called _____.
23. We all start as _____ cell. We end up with _____ of cells.





Name: _____

Date: _____

Bill Nye the Science Guy: Cells

/35

1. All plants and animals in the world are made of _____.
2. People have about _____ cells.
3. Cells are like _____, but cells are _____.
4. Alive or not: What are 2 examples of things that are alive? _____,

5. What are 2 cell parts that both plants and animals have? _____,

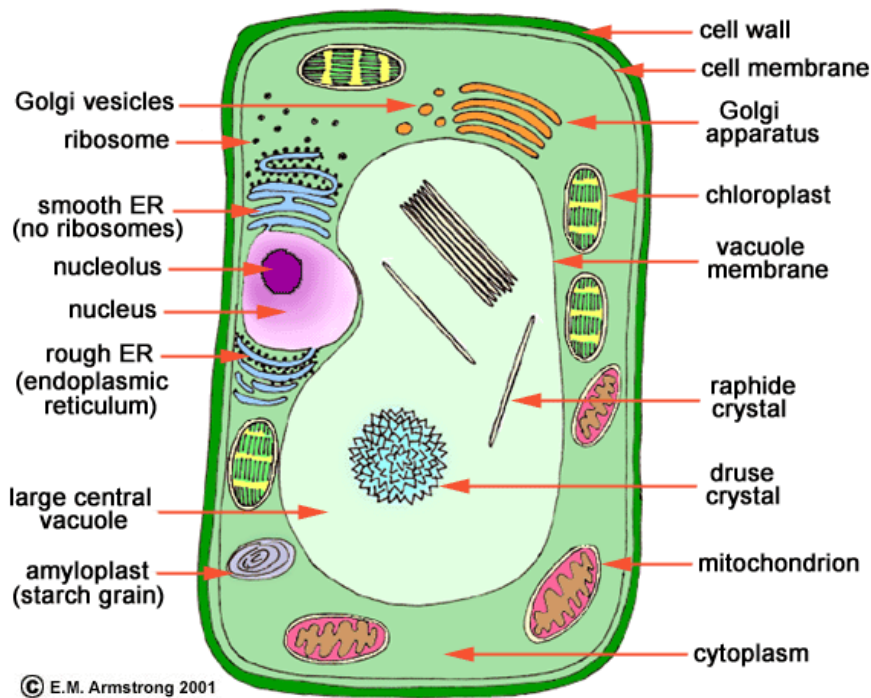
6. Instead of a wall (like in a house), cells have a _____ (plants) or a
_____ (animals).
7. The _____ controls the cell.
8. _____ power the cell.
9. Different cells are like different _____ of the house.
10. Yogurt and cheese are made of _____ cells.
11. _____ are like a roadmap for the cell.
12. During metamorphosis, all the cells get _____.
13. _____ is your body's fastest growing organ.
14. There is no such thing as a _____ boy.
15. _____ tell your cells what to do.
16. Genes are made of _____.



Name: _____

Date: _____

17. _____ are cells you can see without a microscope.
18. _____ have cells that are all dried out.
19. The protein *hemoglobin* has _____ in it which makes blood _____ in color when its hemoglobin is carrying _____.
20. Not all blood cells are _____. Some cells are _____.
21. _____ attack _____ and _____ to keep us from getting sick.
22. Cells exchange _____ with other cells through their _____ using a process called _____.
23. We all start as _____ cell. We end up with _____ of cells.





Name: _____

Date: _____

Bill Nye the Science Guy: Cells

/35

1. All plants and animals in the world are made of _____.
2. People have about _____ cells.
3. Cells are like _____, but cells are _____.
4. Alive or not: What are 2 examples of things that are alive? _____,

5. What are 2 cell parts that both plants and animals have? _____,

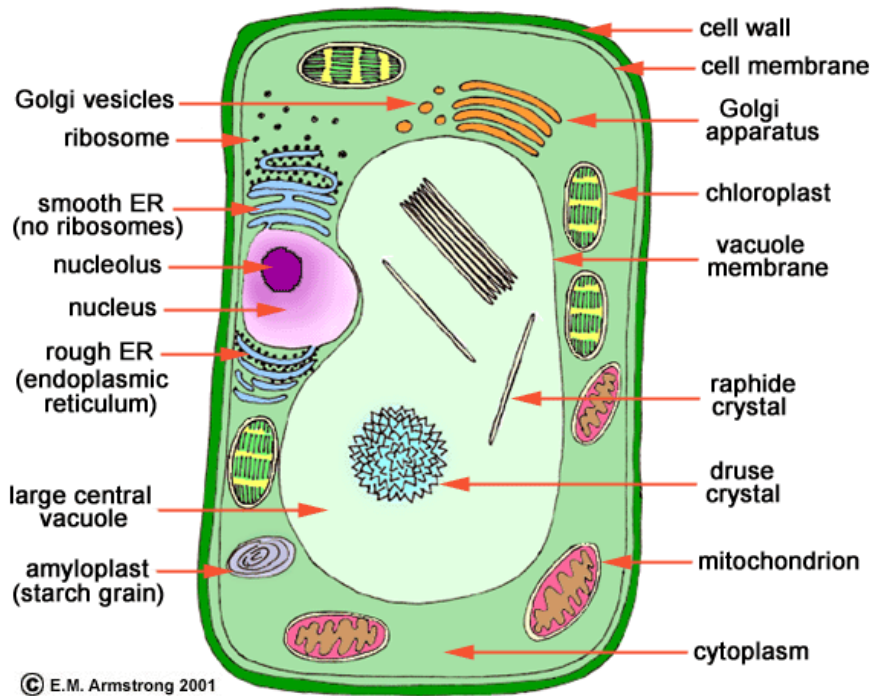
6. Instead of a wall (like in a house), cells have a _____ (plants) or a
_____ (animals).
7. The _____ controls the cell.
8. _____ power the cell.
9. Different cells are like different _____ of the house.
10. Yogurt and cheese are made of _____ cells.
11. _____ are like a roadmap for the cell.
12. During metamorphosis, all the cells get _____.
13. _____ is your body's fastest growing organ.
14. There is no such thing as a _____ boy.
15. _____ tell your cells what to do.
16. Genes are made of _____.



Name: _____

Date: _____

17. _____ are cells you can see without a microscope.
18. _____ have cells that are all dried out.
19. The protein *hemoglobin* has _____ in it which makes blood _____ in color when its hemoglobin is carrying _____.
20. Not all blood cells are _____. Some cells are _____.
21. _____ attack _____ and _____ to keep us from getting sick.
22. Cells exchange _____ with other cells through their _____ using a process called _____.
23. We all start as _____ cell. We end up with _____ of cells.





Name: _____

Date: _____

Bill Nye the Science Guy: Cells

/35

1. All plants and animals in the world are made of _____.
2. People have about _____ cells.
3. Cells are like _____, but cells are _____.
4. Alive or not: What are 2 examples of things that are alive? _____,

5. What are 2 cell parts that both plants and animals have? _____,

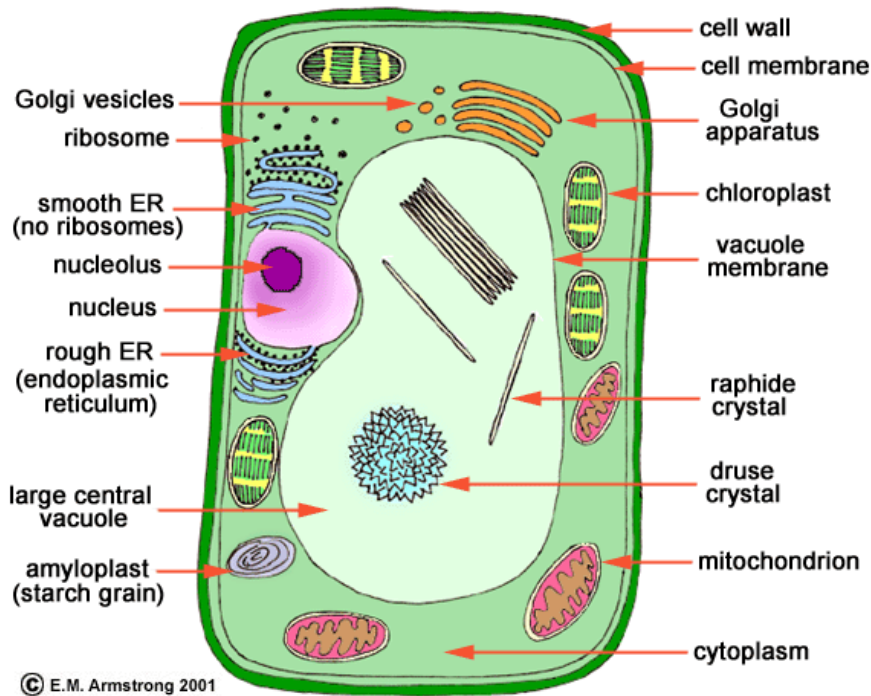
6. Instead of a wall (like in a house), cells have a _____ (plants) or a
_____ (animals).
7. The _____ controls the cell.
8. _____ power the cell.
9. Different cells are like different _____ of the house.
10. Yogurt and cheese are made of _____ cells.
11. _____ are like a roadmap for the cell.
12. During metamorphosis, all the cells get _____.
13. _____ is your body's fastest growing organ.
14. There is no such thing as a _____ boy.
15. _____ tell your cells what to do.
16. Genes are made of _____.



Name: _____

Date: _____

17. _____ are cells you can see without a microscope.
18. _____ have cells that are all dried out.
19. The protein *hemoglobin* has _____ in it which makes blood _____ in color when its hemoglobin is carrying _____.
20. Not all blood cells are _____. Some cells are _____.
21. _____ attack _____ and _____ to keep us from getting sick.
22. Cells exchange _____ with other cells through their _____ using a process called _____.
23. We all start as _____ cell. We end up with _____ of cells.





Name: _____

Date: _____

Bill Nye the Science Guy: Cells

/35

1. All plants and animals in the world are made of _____.
2. People have about _____ cells.
3. Cells are like _____, but cells are _____.
4. Alive or not: What are 2 examples of things that are alive? _____,

5. What are 2 cell parts that both plants and animals have? _____,

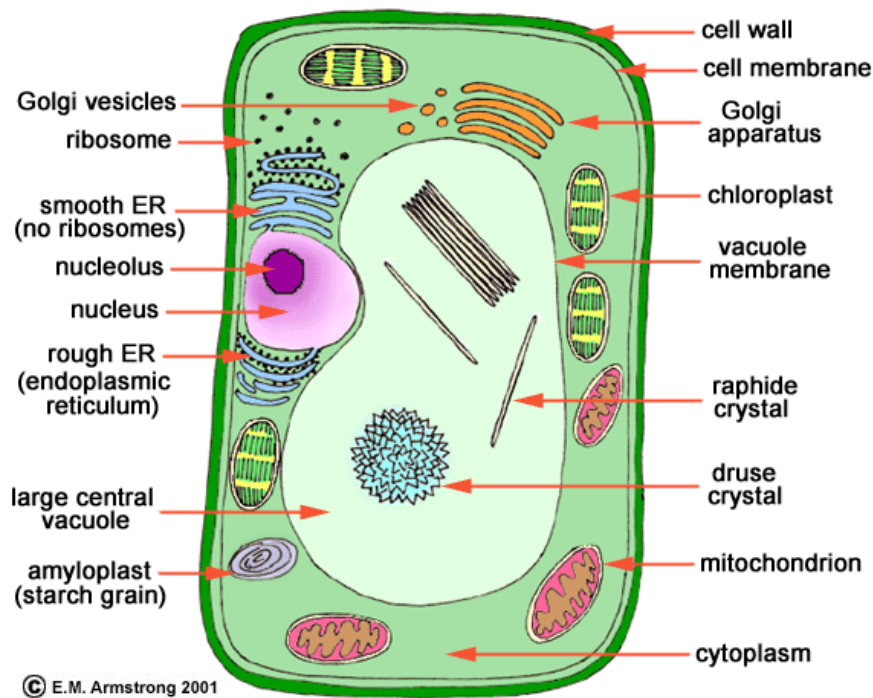
6. Instead of a wall (like in a house), cells have a _____ (plants) or a
_____ (animals).
7. The _____ controls the cell.
8. _____ power the cell.
9. Different cells are like different _____ of the house.
10. Yogurt and cheese are made of _____ cells.
11. _____ are like a roadmap for the cell.
12. During metamorphosis, all the cells get _____.
13. _____ is your body's fastest growing organ.
14. There is no such thing as a _____ boy.
15. _____ tell your cells what to do.
16. Genes are made of _____.



Name: _____

Date: _____

17. _____ are cells you can see without a microscope.
18. _____ have cells that are all dried out.
19. The protein *hemoglobin* has _____ in it which makes blood _____ in color when its hemoglobin is carrying _____.
20. Not all blood cells are _____. Some cells are _____.
21. _____ attack _____ and _____ to keep us from getting sick.
22. Cells exchange _____ with other cells through their _____ using a process called _____.
23. We all start as _____ cell. We end up with _____ of cells.





Name: _____

Date: _____

Bill Nye the Science Guy: Cells

/35

1. All plants and animals in the world are made of _____.
2. People have about _____ cells.
3. Cells are like _____, but cells are _____.
4. Alive or not: What are 2 examples of things that are alive? _____,

5. What are 2 cell parts that both plants and animals have? _____,

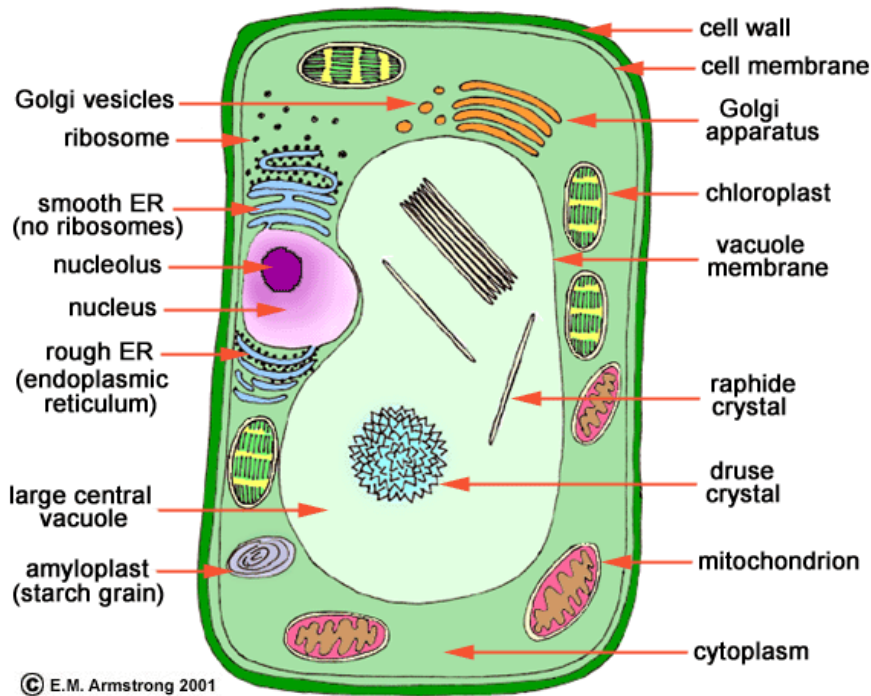
6. Instead of a wall (like in a house), cells have a _____ (plants) or a
_____ (animals).
7. The _____ controls the cell.
8. _____ power the cell.
9. Different cells are like different _____ of the house.
10. Yogurt and cheese are made of _____ cells.
11. _____ are like a roadmap for the cell.
12. During metamorphosis, all the cells get _____.
13. _____ is your body's fastest growing organ.
14. There is no such thing as a _____ boy.
15. _____ tell your cells what to do.
16. Genes are made of _____.



Name: _____

Date: _____

17. _____ are cells you can see without a microscope.
18. _____ have cells that are all dried out.
19. The protein *hemoglobin* has _____ in it which makes blood _____ in color when its hemoglobin is carrying _____.
20. Not all blood cells are _____. Some cells are _____.
21. _____ attack _____ and _____ to keep us from getting sick.
22. Cells exchange _____ with other cells through their _____ using a process called _____.
23. We all start as _____ cell. We end up with _____ of cells.





Name: _____

Date: _____

Bill Nye the Science Guy: Cells

/35

1. All plants and animals in the world are made of _____.
2. People have about _____ cells.
3. Cells are like _____, but cells are _____.
4. Alive or not: What are 2 examples of things that are alive? _____,

5. What are 2 cell parts that both plants and animals have? _____,

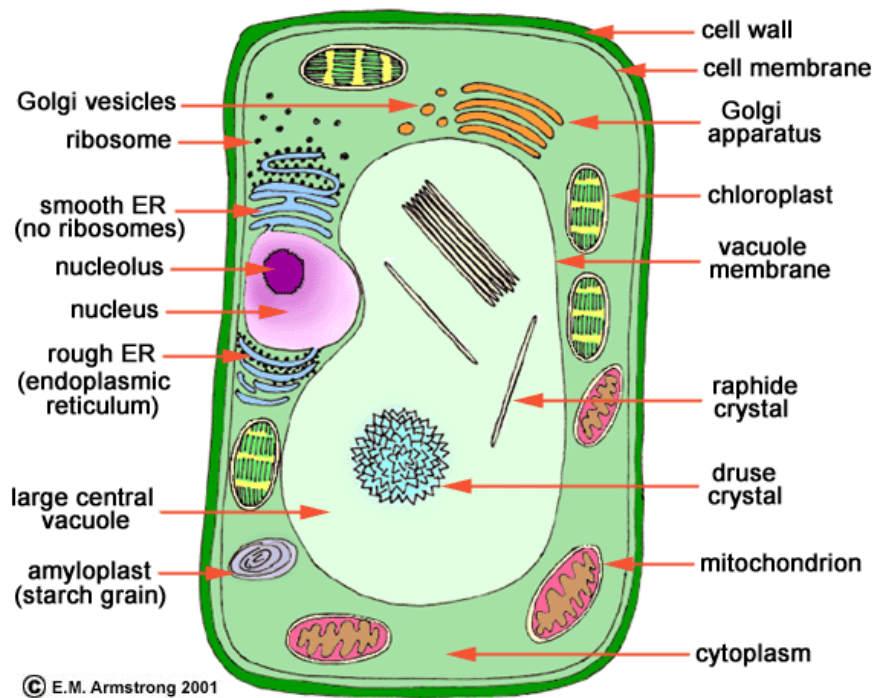
6. Instead of a wall (like in a house), cells have a _____ (plants) or a
_____ (animals).
7. The _____ controls the cell.
8. _____ power the cell.
9. Different cells are like different _____ of the house.
10. Yogurt and cheese are made of _____ cells.
11. _____ are like a roadmap for the cell.
12. During metamorphosis, all the cells get _____.
13. _____ is your body's fastest growing organ.
14. There is no such thing as a _____ boy.
15. _____ tell your cells what to do.
16. Genes are made of _____.



Name: _____

Date: _____

17. _____ are cells you can see without a microscope.
18. _____ have cells that are all dried out.
19. The protein *hemoglobin* has _____ in it which makes blood _____ in color when its hemoglobin is carrying _____.
20. Not all blood cells are _____. Some cells are _____.
21. _____ attack _____ and _____ to keep us from getting sick.
22. Cells exchange _____ with other cells through their _____ using a process called _____.
23. We all start as _____ cell. We end up with _____ of cells.





Name: _____

Date: _____

Bill Nye the Science Guy: Cells

/35

1. All plants and animals in the world are made of _____.
2. People have about _____ cells.
3. Cells are like _____, but cells are _____.
4. Alive or not: What are 2 examples of things that are alive? _____,

5. What are 2 cell parts that both plants and animals have? _____,

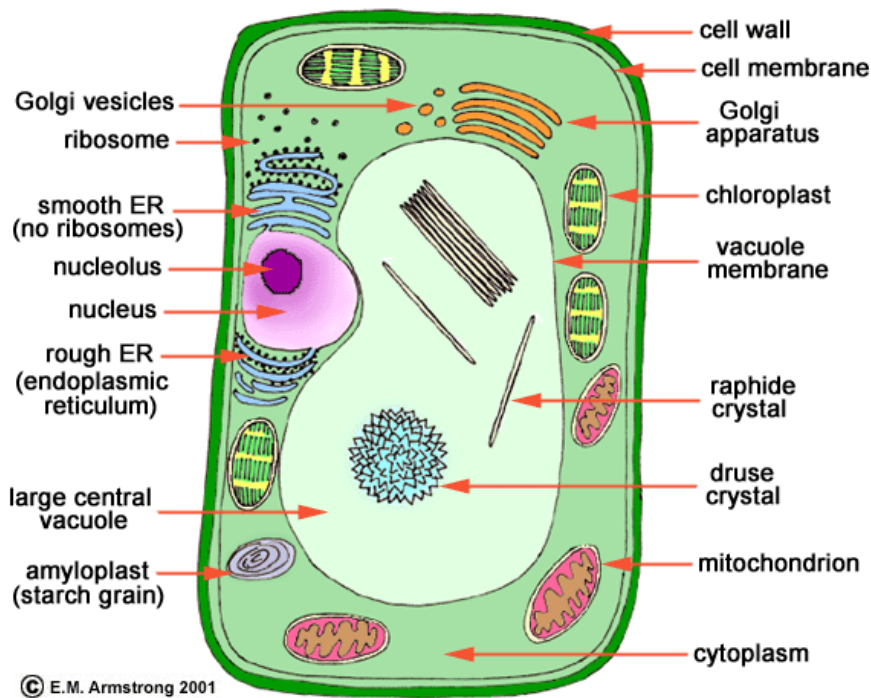
6. Instead of a wall (like in a house), cells have a _____ (plants) or a
_____ (animals).
7. The _____ controls the cell.
8. _____ power the cell.
9. Different cells are like different _____ of the house.
10. Yogurt and cheese are made of _____ cells.
11. _____ are like a roadmap for the cell.
12. During metamorphosis, all the cells get _____.
13. _____ is your body's fastest growing organ.
14. There is no such thing as a _____ boy.
15. _____ tell your cells what to do.
16. Genes are made of _____.



Name: _____

Date: _____

17. _____ are cells you can see without a microscope.
18. _____ have cells that are all dried out.
19. The protein *hemoglobin* has _____ in it which makes blood _____ in color when its hemoglobin is carrying _____.
20. Not all blood cells are _____. Some cells are _____.
21. _____ attack _____ and _____ to keep us from getting sick.
22. Cells exchange _____ with other cells through their _____ using a process called _____.
23. We all start as _____ cell. We end up with _____ of cells.





Name: _____

Date: _____

Bill Nye the Science Guy: Cells

/35

1. All plants and animals in the world are made of _____.
2. People have about _____ cells.
3. Cells are like _____, but cells are _____.
4. Alive or not: What are 2 examples of things that are alive? _____,

5. What are 2 cell parts that both plants and animals have? _____,

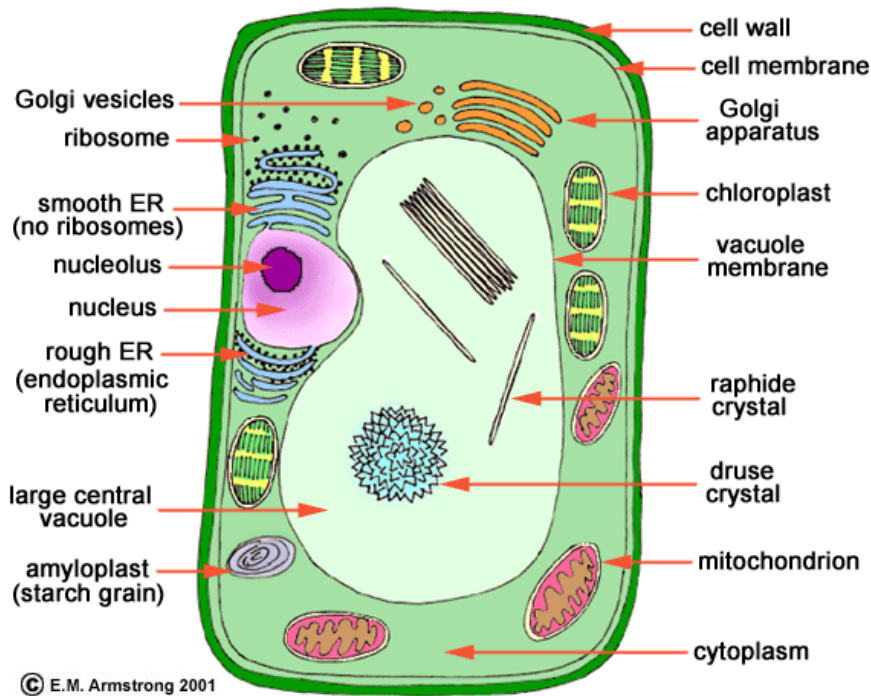
6. Instead of a wall (like in a house), cells have a _____ (plants) or a
_____ (animals).
7. The _____ controls the cell.
8. _____ power the cell.
9. Different cells are like different _____ of the house.
10. Yogurt and cheese are made of _____ cells.
11. _____ are like a roadmap for the cell.
12. During metamorphosis, all the cells get _____.
13. _____ is your body's fastest growing organ.
14. There is no such thing as a _____ boy.
15. _____ tell your cells what to do.
16. Genes are made of _____.



Name: _____

Date: _____

17. _____ are cells you can see without a microscope.
18. _____ have cells that are all dried out.
19. The protein *hemoglobin* has _____ in it which makes blood _____ in color when its hemoglobin is carrying _____.
20. Not all blood cells are _____. Some cells are _____.
21. _____ attack _____ and _____ to keep us from getting sick.
22. Cells exchange _____ with other cells through their _____ using a process called _____.
23. We all start as _____ cell. We end up with _____ of cells.





Name: _____

Date: _____

Bill Nye the Science Guy: Cells

/35

1. All plants and animals in the world are made of _____.
2. People have about _____ cells.
3. Cells are like _____, but cells are _____.
4. Alive or not: What are 2 examples of things that are alive? _____,

5. What are 2 cell parts that both plants and animals have? _____,

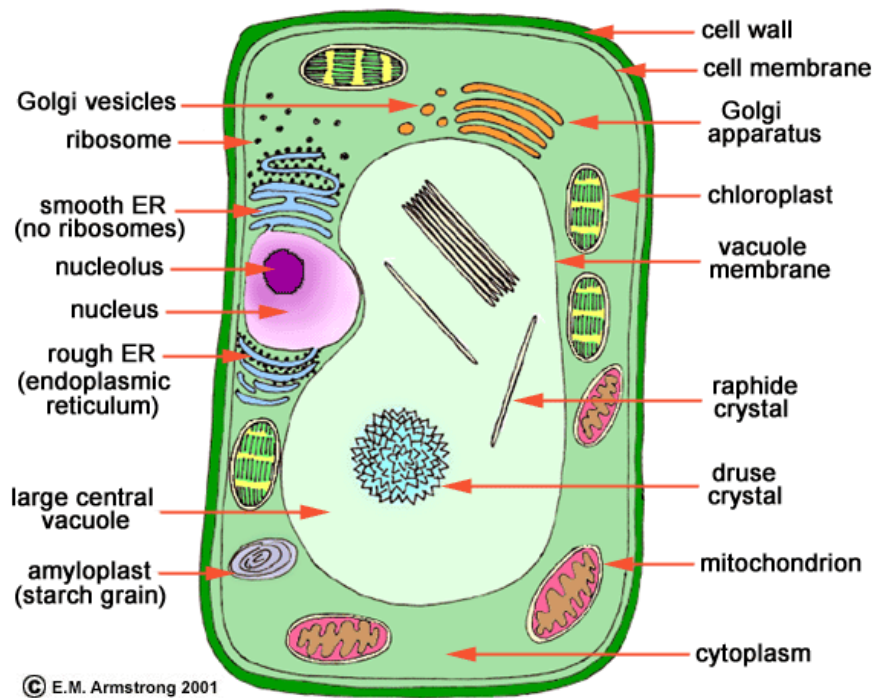
6. Instead of a wall (like in a house), cells have a _____ (plants) or a
_____ (animals).
7. The _____ controls the cell.
8. _____ power the cell.
9. Different cells are like different _____ of the house.
10. Yogurt and cheese are made of _____ cells.
11. _____ are like a roadmap for the cell.
12. During metamorphosis, all the cells get _____.
13. _____ is your body's fastest growing organ.
14. There is no such thing as a _____ boy.
15. _____ tell your cells what to do.
16. Genes are made of _____.



Name: _____

Date: _____

17. _____ are cells you can see without a microscope.
18. _____ have cells that are all dried out.
19. The protein *hemoglobin* has _____ in it which makes blood _____ in color when its hemoglobin is carrying _____.
20. Not all blood cells are _____. Some cells are _____.
21. _____ attack _____ and _____ to keep us from getting sick.
22. Cells exchange _____ with other cells through their _____ using a process called _____.
23. We all start as _____ cell. We end up with _____ of cells.





Name: _____

Date: _____

Bill Nye the Science Guy: Cells

/35

1. All plants and animals in the world are made of _____.
2. People have about _____ cells.
3. Cells are like _____, but cells are _____.
4. Alive or not: What are 2 examples of things that are alive? _____,

5. What are 2 cell parts that both plants and animals have? _____,

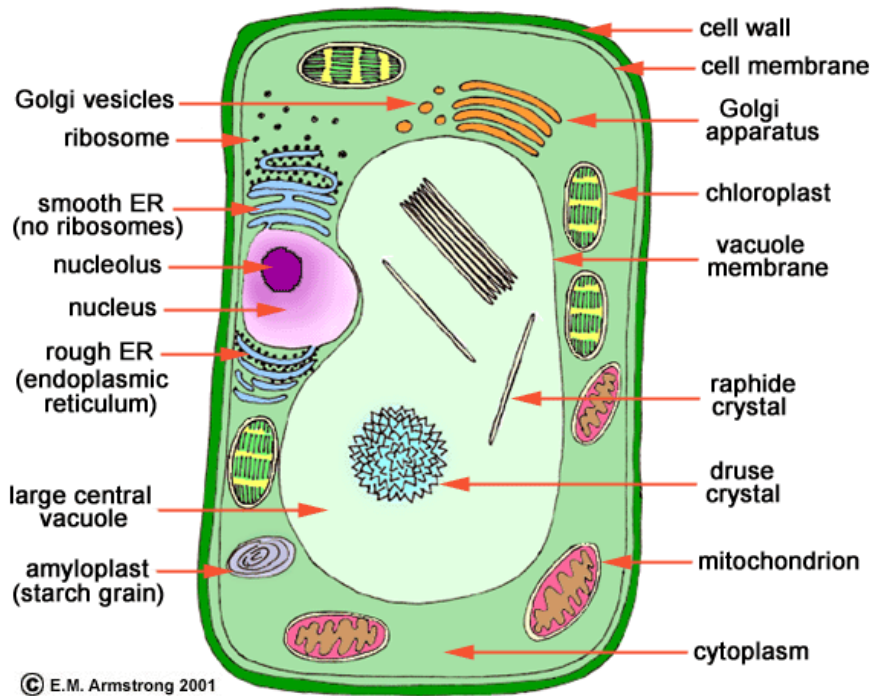
6. Instead of a wall (like in a house), cells have a _____ (plants) or a
_____ (animals).
7. The _____ controls the cell.
8. _____ power the cell.
9. Different cells are like different _____ of the house.
10. Yogurt and cheese are made of _____ cells.
11. _____ are like a roadmap for the cell.
12. During metamorphosis, all the cells get _____.
13. _____ is your body's fastest growing organ.
14. There is no such thing as a _____ boy.
15. _____ tell your cells what to do.
16. Genes are made of _____.



Name: _____

Date: _____

17. _____ are cells you can see without a microscope.
18. _____ have cells that are all dried out.
19. The protein *hemoglobin* has _____ in it which makes blood _____ in color when its hemoglobin is carrying _____.
20. Not all blood cells are _____. Some cells are _____.
21. _____ attack _____ and _____ to keep us from getting sick.
22. Cells exchange _____ with other cells through their _____ using a process called _____.
23. We all start as _____ cell. We end up with _____ of cells.





Name: _____

Date: _____

Bill Nye the Science Guy: Cells

/35

1. All plants and animals in the world are made of _____.
2. People have about _____ cells.
3. Cells are like _____, but cells are _____.
4. Alive or not: What are 2 examples of things that are alive? _____,

5. What are 2 cell parts that both plants and animals have? _____,

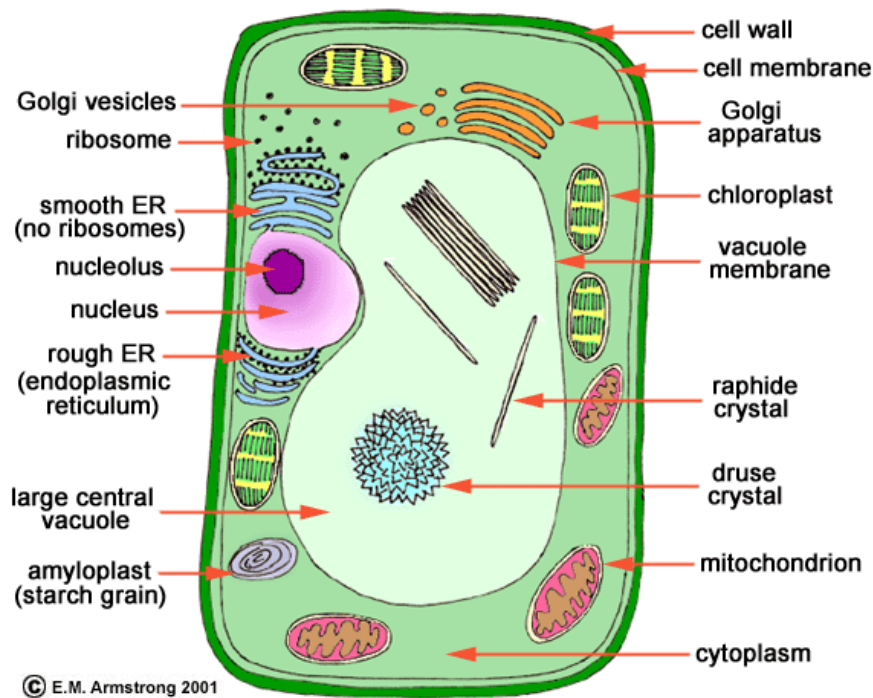
6. Instead of a wall (like in a house), cells have a _____ (plants) or a
_____ (animals).
7. The _____ controls the cell.
8. _____ power the cell.
9. Different cells are like different _____ of the house.
10. Yogurt and cheese are made of _____ cells.
11. _____ are like a roadmap for the cell.
12. During metamorphosis, all the cells get _____.
13. _____ is your body's fastest growing organ.
14. There is no such thing as a _____ boy.
15. _____ tell your cells what to do.
16. Genes are made of _____.



Name: _____

Date: _____

17. _____ are cells you can see without a microscope.
18. _____ have cells that are all dried out.
19. The protein *hemoglobin* has _____ in it which makes blood _____ in color when its hemoglobin is carrying _____.
20. Not all blood cells are _____. Some cells are _____.
21. _____ attack _____ and _____ to keep us from getting sick.
22. Cells exchange _____ with other cells through their _____ using a process called _____.
23. We all start as _____ cell. We end up with _____ of cells.





Name: _____

Date: _____

Bill Nye the Science Guy: Cells

/35

1. All plants and animals in the world are made of _____.
2. People have about _____ cells.
3. Cells are like _____, but cells are _____.
4. Alive or not: What are 2 examples of things that are alive? _____,

5. What are 2 cell parts that both plants and animals have? _____,

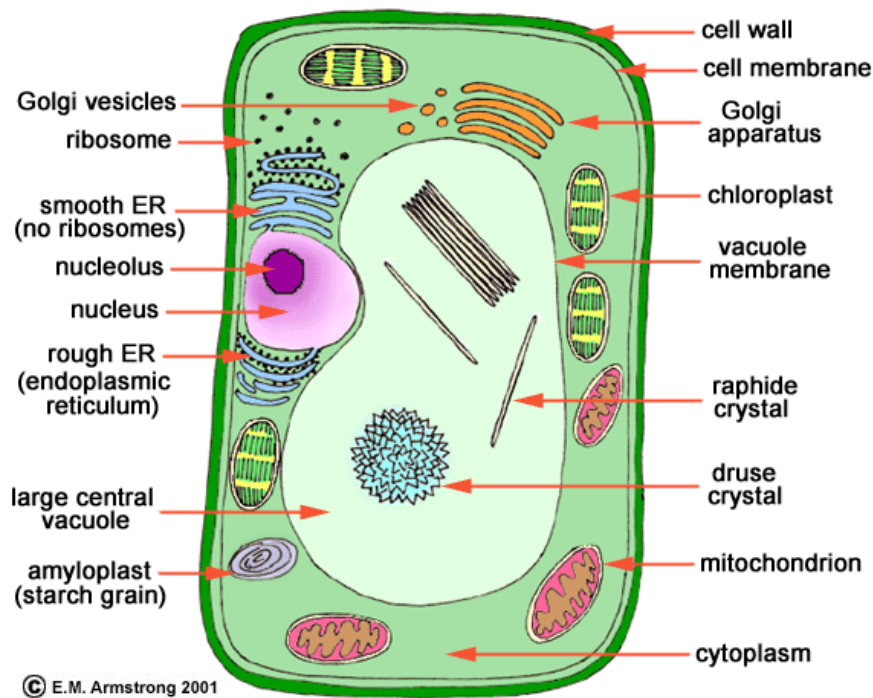
6. Instead of a wall (like in a house), cells have a _____ (plants) or a
_____ (animals).
7. The _____ controls the cell.
8. _____ power the cell.
9. Different cells are like different _____ of the house.
10. Yogurt and cheese are made of _____ cells.
11. _____ are like a roadmap for the cell.
12. During metamorphosis, all the cells get _____.
13. _____ is your body's fastest growing organ.
14. There is no such thing as a _____ boy.
15. _____ tell your cells what to do.
16. Genes are made of _____.



Name: _____

Date: _____

17. _____ are cells you can see without a microscope.
18. _____ have cells that are all dried out.
19. The protein *hemoglobin* has _____ in it which makes blood _____ in color when its hemoglobin is carrying _____.
20. Not all blood cells are _____. Some cells are _____.
21. _____ attack _____ and _____ to keep us from getting sick.
22. Cells exchange _____ with other cells through their _____ using a process called _____.
23. We all start as _____ cell. We end up with _____ of cells.





Name: _____

Date: _____

Bill Nye the Science Guy: Cells

/35

1. All plants and animals in the world are made of _____.
2. People have about _____ cells.
3. Cells are like _____, but cells are _____.
4. Alive or not: What are 2 examples of things that are alive? _____,

5. What are 2 cell parts that both plants and animals have? _____,

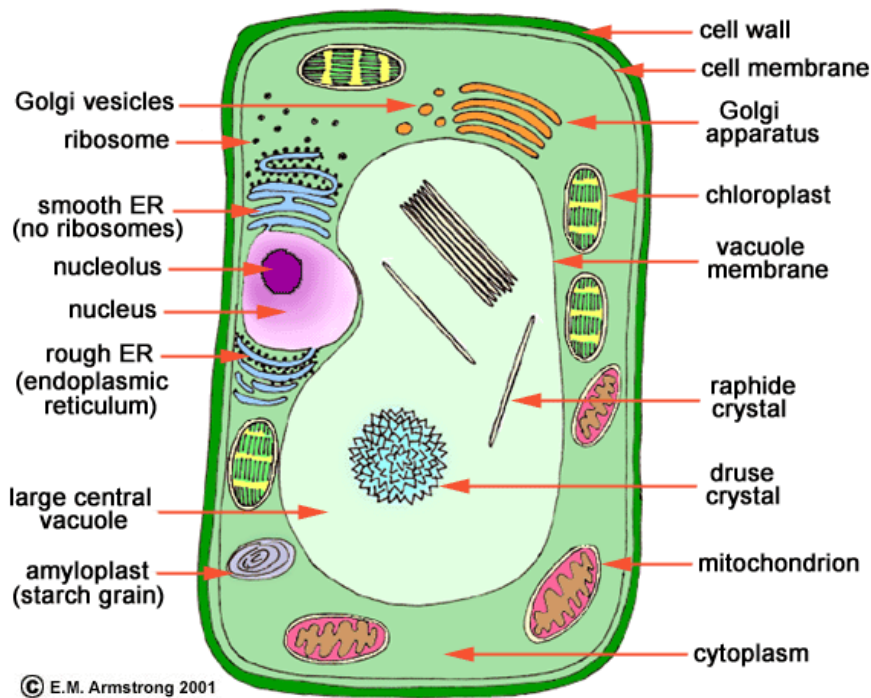
6. Instead of a wall (like in a house), cells have a _____ (plants) or a
_____ (animals).
7. The _____ controls the cell.
8. _____ power the cell.
9. Different cells are like different _____ of the house.
10. Yogurt and cheese are made of _____ cells.
11. _____ are like a roadmap for the cell.
12. During metamorphosis, all the cells get _____.
13. _____ is your body's fastest growing organ.
14. There is no such thing as a _____ boy.
15. _____ tell your cells what to do.
16. Genes are made of _____.



Name: _____

Date: _____

17. _____ are cells you can see without a microscope.
18. _____ have cells that are all dried out.
19. The protein *hemoglobin* has _____ in it which makes blood _____ in color when its hemoglobin is carrying _____.
20. Not all blood cells are _____. Some cells are _____.
21. _____ attack _____ and _____ to keep us from getting sick.
22. Cells exchange _____ with other cells through their _____ using a process called _____.
23. We all start as _____ cell. We end up with _____ of cells.





Name: _____

Date: _____

Bill Nye the Science Guy: Cells

/35

1. All plants and animals in the world are made of _____.
2. People have about _____ cells.
3. Cells are like _____, but cells are _____.
4. Alive or not: What are 2 examples of things that are alive? _____,

5. What are 2 cell parts that both plants and animals have? _____,

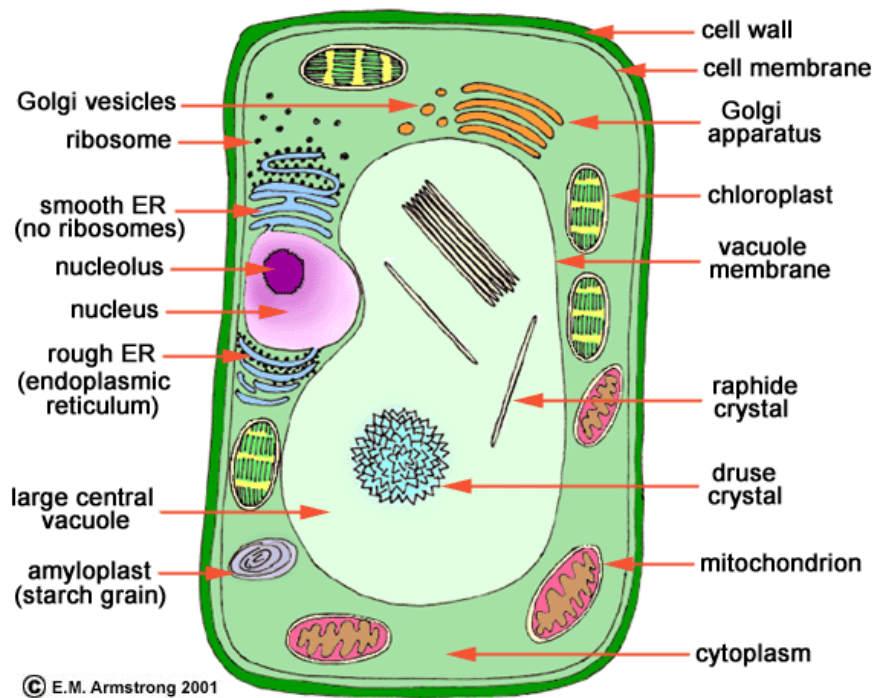
6. Instead of a wall (like in a house), cells have a _____ (plants) or a
_____ (animals).
7. The _____ controls the cell.
8. _____ power the cell.
9. Different cells are like different _____ of the house.
10. Yogurt and cheese are made of _____ cells.
11. _____ are like a roadmap for the cell.
12. During metamorphosis, all the cells get _____.
13. _____ is your body's fastest growing organ.
14. There is no such thing as a _____ boy.
15. _____ tell your cells what to do.
16. Genes are made of _____.



Name: _____

Date: _____

17. _____ are cells you can see without a microscope.
18. _____ have cells that are all dried out.
19. The protein *hemoglobin* has _____ in it which makes blood _____ in color when its hemoglobin is carrying _____.
20. Not all blood cells are _____. Some cells are _____.
21. _____ attack _____ and _____ to keep us from getting sick.
22. Cells exchange _____ with other cells through their _____ using a process called _____.
23. We all start as _____ cell. We end up with _____ of cells.





Name: _____

Date: _____

Bill Nye the Science Guy: Cells

/35

1. All plants and animals in the world are made of _____.
2. People have about _____ cells.
3. Cells are like _____, but cells are _____.
4. Alive or not: What are 2 examples of things that are alive? _____,

5. What are 2 cell parts that both plants and animals have? _____,

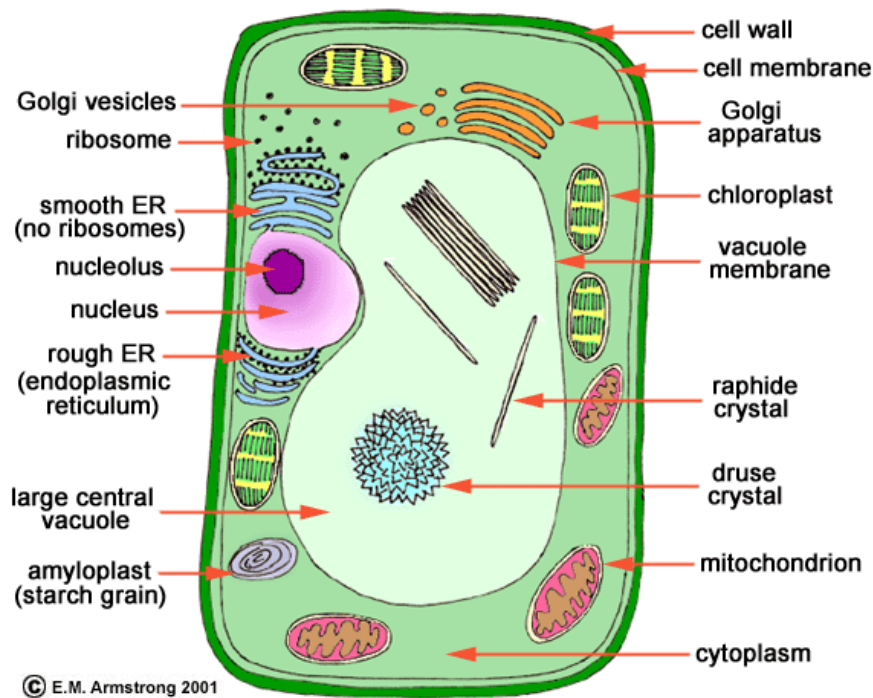
6. Instead of a wall (like in a house), cells have a _____ (plants) or a
_____ (animals).
7. The _____ controls the cell.
8. _____ power the cell.
9. Different cells are like different _____ of the house.
10. Yogurt and cheese are made of _____ cells.
11. _____ are like a roadmap for the cell.
12. During metamorphosis, all the cells get _____.
13. _____ is your body's fastest growing organ.
14. There is no such thing as a _____ boy.
15. _____ tell your cells what to do.
16. Genes are made of _____.



Name: _____

Date: _____

17. _____ are cells you can see without a microscope.
18. _____ have cells that are all dried out.
19. The protein *hemoglobin* has _____ in it which makes blood _____ in color when its hemoglobin is carrying _____.
20. Not all blood cells are _____. Some cells are _____.
21. _____ attack _____ and _____ to keep us from getting sick.
22. Cells exchange _____ with other cells through their _____ using a process called _____.
23. We all start as _____ cell. We end up with _____ of cells.





Name: _____

Date: _____

Bill Nye the Science Guy: Cells

/35

1. All plants and animals in the world are made of _____.
2. People have about _____ cells.
3. Cells are like _____, but cells are _____.
4. Alive or not: What are 2 examples of things that are alive? _____,

5. What are 2 cell parts that both plants and animals have? _____,

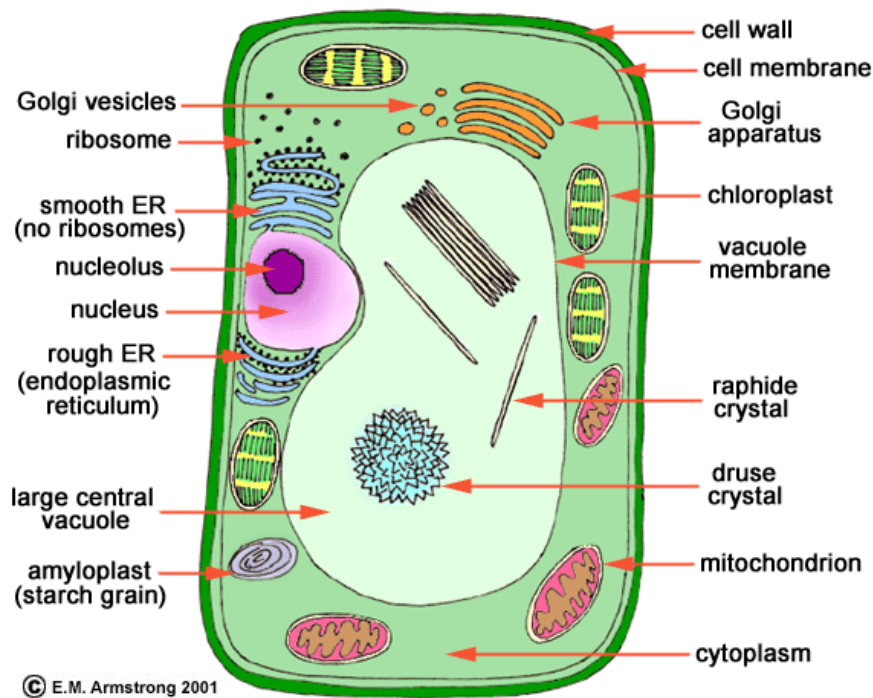
6. Instead of a wall (like in a house), cells have a _____ (plants) or a
_____ (animals).
7. The _____ controls the cell.
8. _____ power the cell.
9. Different cells are like different _____ of the house.
10. Yogurt and cheese are made of _____ cells.
11. _____ are like a roadmap for the cell.
12. During metamorphosis, all the cells get _____.
13. _____ is your body's fastest growing organ.
14. There is no such thing as a _____ boy.
15. _____ tell your cells what to do.
16. Genes are made of _____.



Name: _____

Date: _____

17. _____ are cells you can see without a microscope.
18. _____ have cells that are all dried out.
19. The protein *hemoglobin* has _____ in it which makes blood _____ in color when its hemoglobin is carrying _____.
20. Not all blood cells are _____. Some cells are _____.
21. _____ attack _____ and _____ to keep us from getting sick.
22. Cells exchange _____ with other cells through their _____ using a process called _____.
23. We all start as _____ cell. We end up with _____ of cells.





Name: _____

Date: _____

Bill Nye the Science Guy: Cells

/35

1. All plants and animals in the world are made of _____.
2. People have about _____ cells.
3. Cells are like _____, but cells are _____.
4. Alive or not: What are 2 examples of things that are alive? _____,

5. What are 2 cell parts that both plants and animals have? _____,

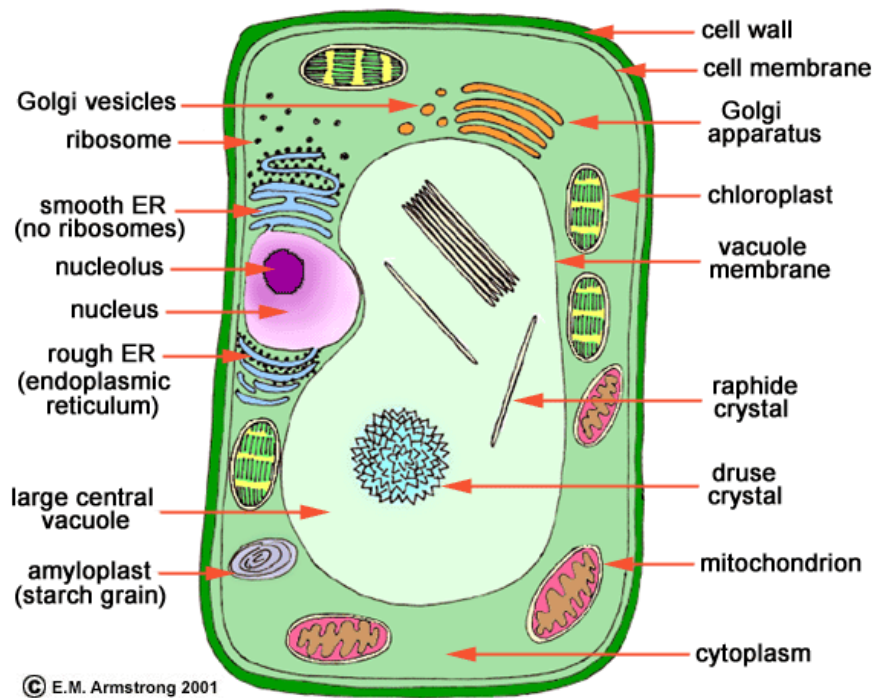
6. Instead of a wall (like in a house), cells have a _____ (plants) or a
_____ (animals).
7. The _____ controls the cell.
8. _____ power the cell.
9. Different cells are like different _____ of the house.
10. Yogurt and cheese are made of _____ cells.
11. _____ are like a roadmap for the cell.
12. During metamorphosis, all the cells get _____.
13. _____ is your body's fastest growing organ.
14. There is no such thing as a _____ boy.
15. _____ tell your cells what to do.
16. Genes are made of _____.



Name: _____

Date: _____

17. _____ are cells you can see without a microscope.
18. _____ have cells that are all dried out.
19. The protein *hemoglobin* has _____ in it which makes blood _____ in color when its hemoglobin is carrying _____.
20. Not all blood cells are _____. Some cells are _____.
21. _____ attack _____ and _____ to keep us from getting sick.
22. Cells exchange _____ with other cells through their _____ using a process called _____.
23. We all start as _____ cell. We end up with _____ of cells.





Name: _____

Date: _____

Bill Nye the Science Guy: Cells

/35

1. All plants and animals in the world are made of _____.
2. People have about _____ cells.
3. Cells are like _____, but cells are _____.
4. Alive or not: What are 2 examples of things that are alive? _____,

5. What are 2 cell parts that both plants and animals have? _____,

6. Instead of a wall (like in a house), cells have a _____ (plants) or a
_____ (animals).
7. The _____ controls the cell.
8. _____ power the cell.
9. Different cells are like different _____ of the house.
10. Yogurt and cheese are made of _____ cells.
11. _____ are like a roadmap for the cell.
12. During metamorphosis, all the cells get _____.
13. _____ is your body's fastest growing organ.
14. There is no such thing as a _____ boy.
15. _____ tell your cells what to do.
16. Genes are made of _____.



Name: _____

Date: _____

17. _____ are cells you can see without a microscope.
18. _____ have cells that are all dried out.
19. The protein *hemoglobin* has _____ in it which makes blood _____ in color when its hemoglobin is carrying _____.
20. Not all blood cells are _____. Some cells are _____.
21. _____ attack _____ and _____ to keep us from getting sick.
22. Cells exchange _____ with other cells through their _____ using a process called _____.
23. We all start as _____ cell. We end up with _____ of cells.

